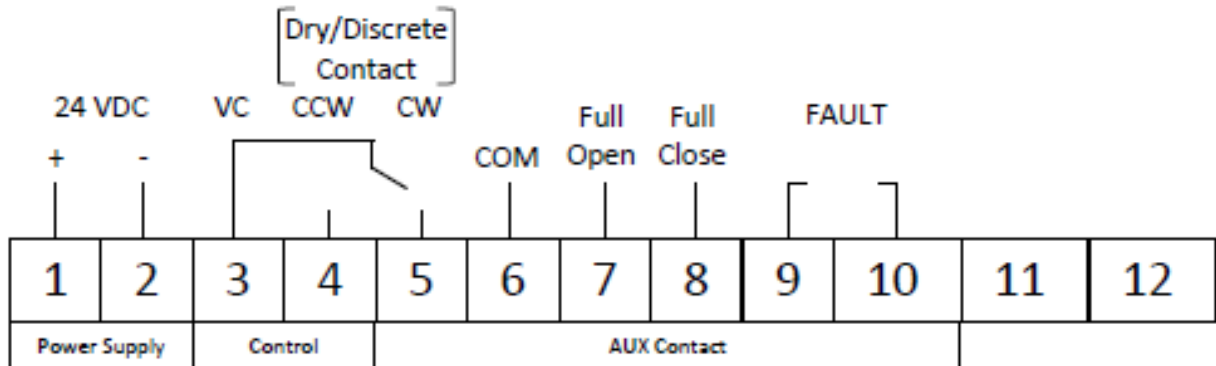




## V-Tork VTM Electric Actuator 24 VDC ON/OFF (No Modulating)



**NOTE:** If this actuator was supplied mounted to a valve, it has been calibrated and cycle tested for accuracy by Legacy Flow Control.

### 24 VDC Power Supply:

(+) to Terminal 1, (-) to Terminal 2

### ON/OFF Control:

OPEN/CCW: Using a dry contact, connect to Terminals 3 and 4 to run valve CCW.

CLOSE/CW: Using a dry contact, connect to Terminals 3 and 5 to run valve CW.

### AUXILIARY Contact:

Fully Open/CCW: Ports at terminals 6 and 7 will connect when the valve position reaches full Open/CCW.

Fully Close/CW: Ports at terminals 6 and 8 will connect when the valve position reaches full Close/CW.

### FAULT:

Ports at terminals 9 and 10 will connect when the product fails to work.

### PASSWORD:

For calibration, the password has been set to 006.

### FAILURE MODES:

1. On/Off actuator with no battery – fail in place on loss of power
2. On/Off actuator with battery – fail close on loss of power unless specified while ordering.

### MANUAL OPERATION:

This actuator is equipped with a clutchless manual override. If manual overriding is attempted with power ON and in the “REM” (remote) setting, the actuator will continue to move to the last signal position it was given. With no power, the actuator can be overridden. To open valve, rotate handwheel CCW direction. To close valve, rotate handwheel CW direction. With power still on actuator, it must be placed into “LOC” (local) control for the handwheel and override to be effectively engaged.